



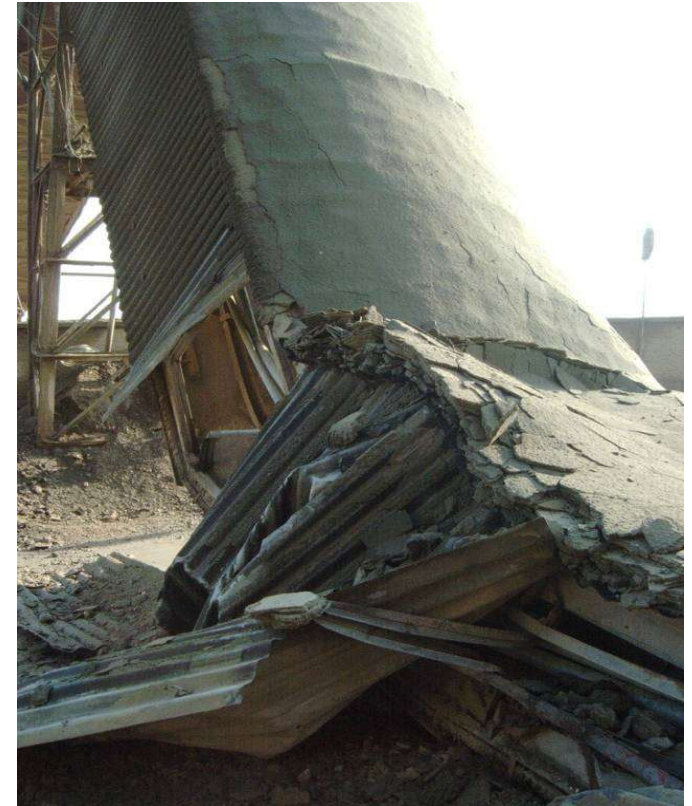
Industrial Vacuum Systems for Cement Industry - Introduction and Overview by Marcus Borrmann



Typical problems in a Cement Plant



Does your plant look like this ...



or are you already one step ahead...?

Typical problems in a Cement Plant



Conveying and processing equipment needs to be regularly cleaned.



Operational Excellence with Vacuum Cleaning Technology

Keeping the Cement Plant production areas clean is highly recommended.

Why?

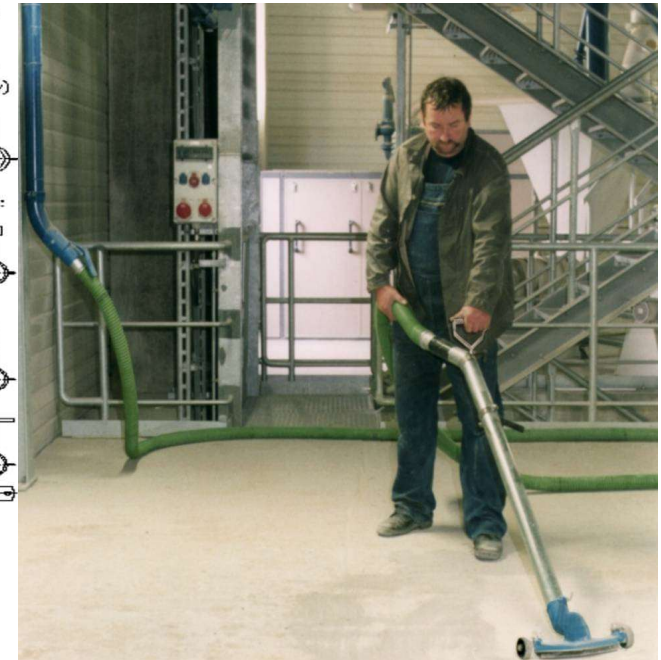
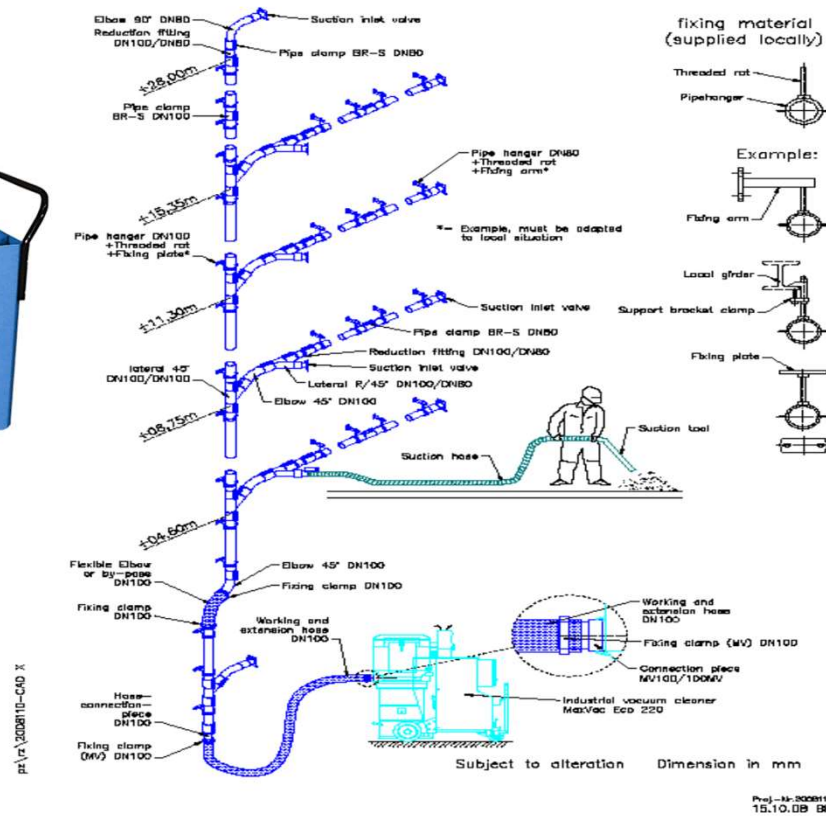
- ✓ Clean in-plant and external environment → Emission reduction
- ✓ Increase of the production volume
- ✓ Reduction of maintenance cost
- ✓ Reduction of labor cost
- ✓ Recycling of valuable raw material
- ✓ Increase of operational result
- ✓ Reduction of explosion risks in the coal mill



Three ways to get best results: 1) Portable Industrial Vacuum Units



Example for Pipe work system with a semi-stationary vacuum unit



Three ways to get best results:
2) Stationary Vacuum Systems

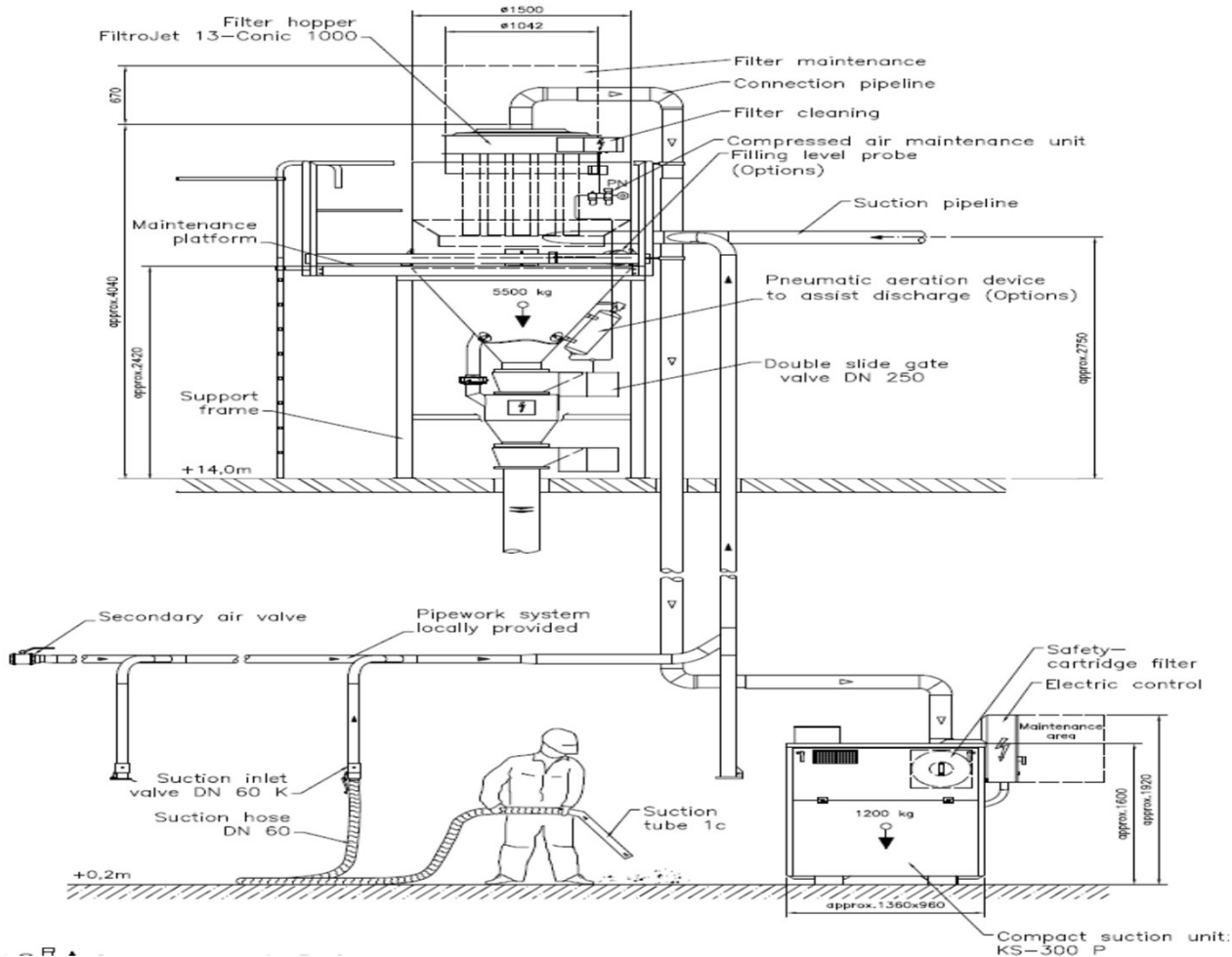


KS units with rotary piston vacuum pump for maximum suction power

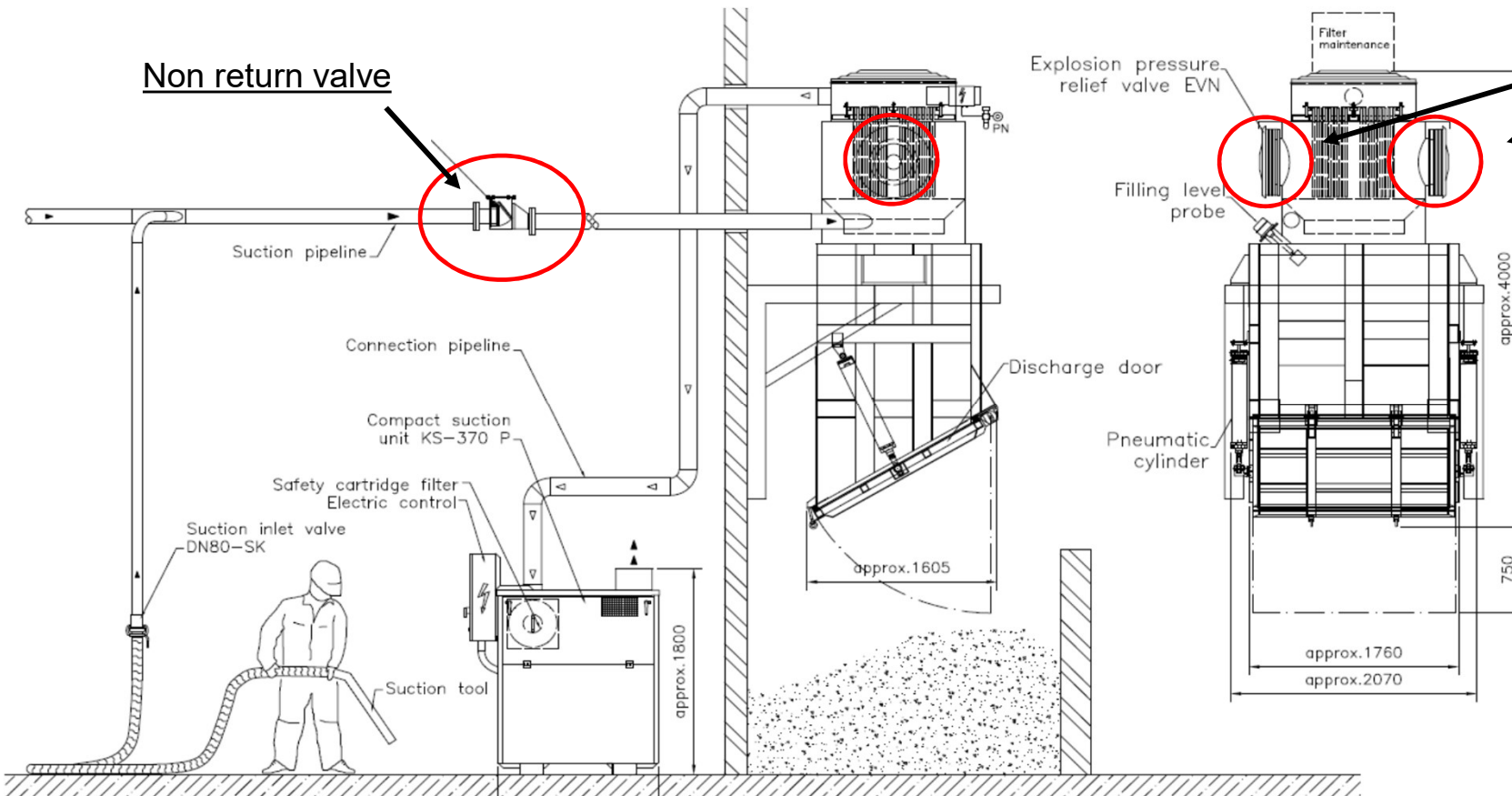
- Designed for customer-specific requirements, driving power 22-150 kW
- Provide the suction power required for long suction distances, high conveying rates or difficult suction materials



Extraction of large quantities of suction material



Cleaning of the Coal mill as well as RDF areas with explosion protected vacuum units

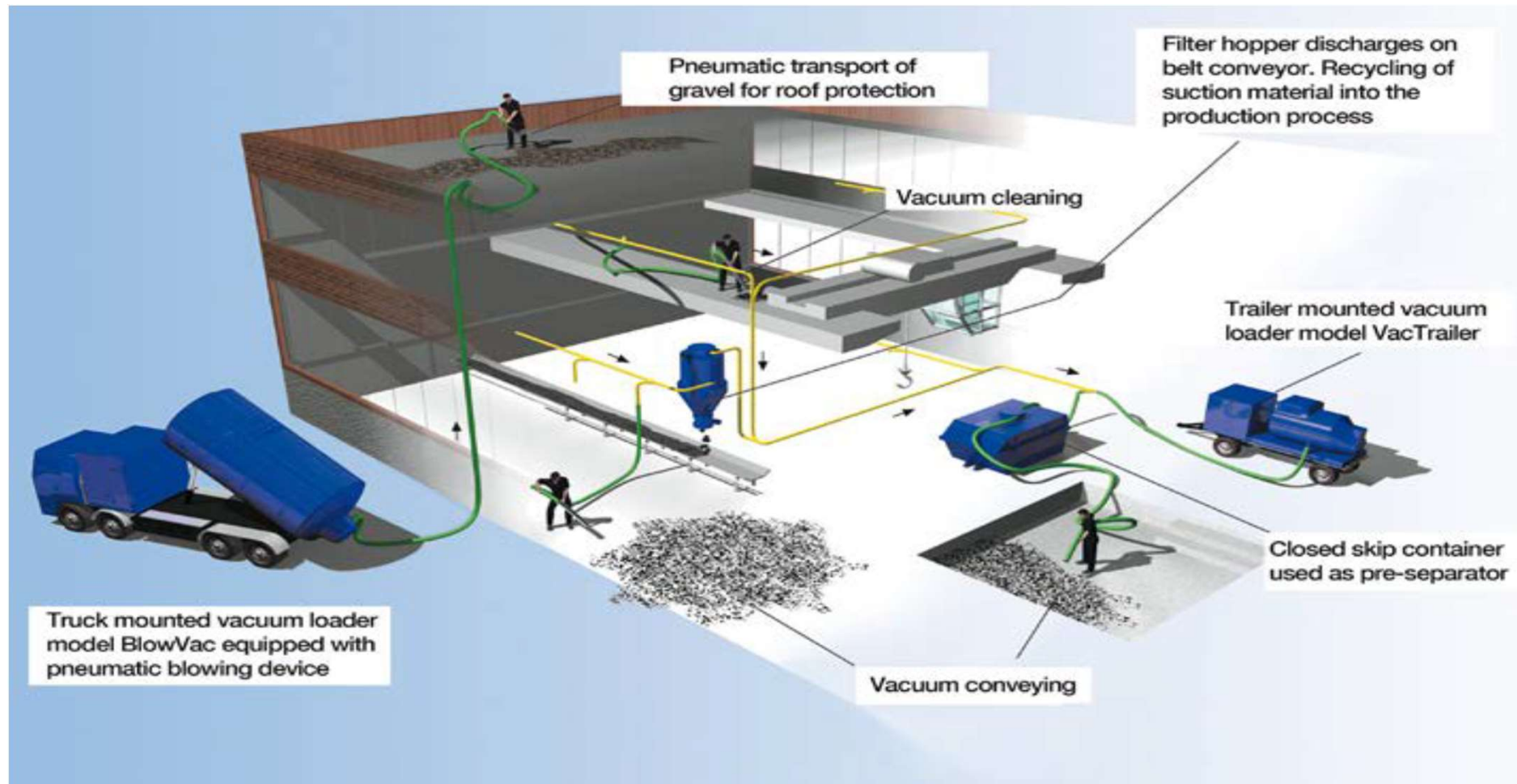


Stationary Vacuum System for Refuse Derived Fuels (RDF)

Three ways to get best results:
3) Mobile suction units, Vacuum Loaders



Typical applications for mobile vacuum units connected to a suction pipeline





BlowVac SL 8200 TG



**BlowVac with 8200 m³/h airflow mounted on a 4-axle truck
- collection volume 17,8 m³**

**Easy and fast filter
exchange**



Pressure discharge device with a discharge height of up to 50 m



Technical data		
Airflow*	m ³ /h	8200
Suction power*	mbar	900
Suction inlet	DN	200
Power input of the split shaft gear box, approx.	kW	240
Collection volume, approx.	m ³	17.8
Collection capacity, approx.	m ³	13.5
Main filter	m ²	40
Safety filter	m ²	40
Noise level, 7 m distance**	dB(A)	83
Weight, standard equipment, approx.	kg	12100

* max. vacuum pump, ** reflexion free



BlowVac Conic



**BlowVac Conic with 3700 m³/h airflow
- collection volume 6,4 m³**



Explosion relief valves



BlowVac Conic – Trailer mounted



**BlowVac 6000 mounted on a trailer with hydraulically operated suction arm
- collection capacity 10 m³**

VacTruck

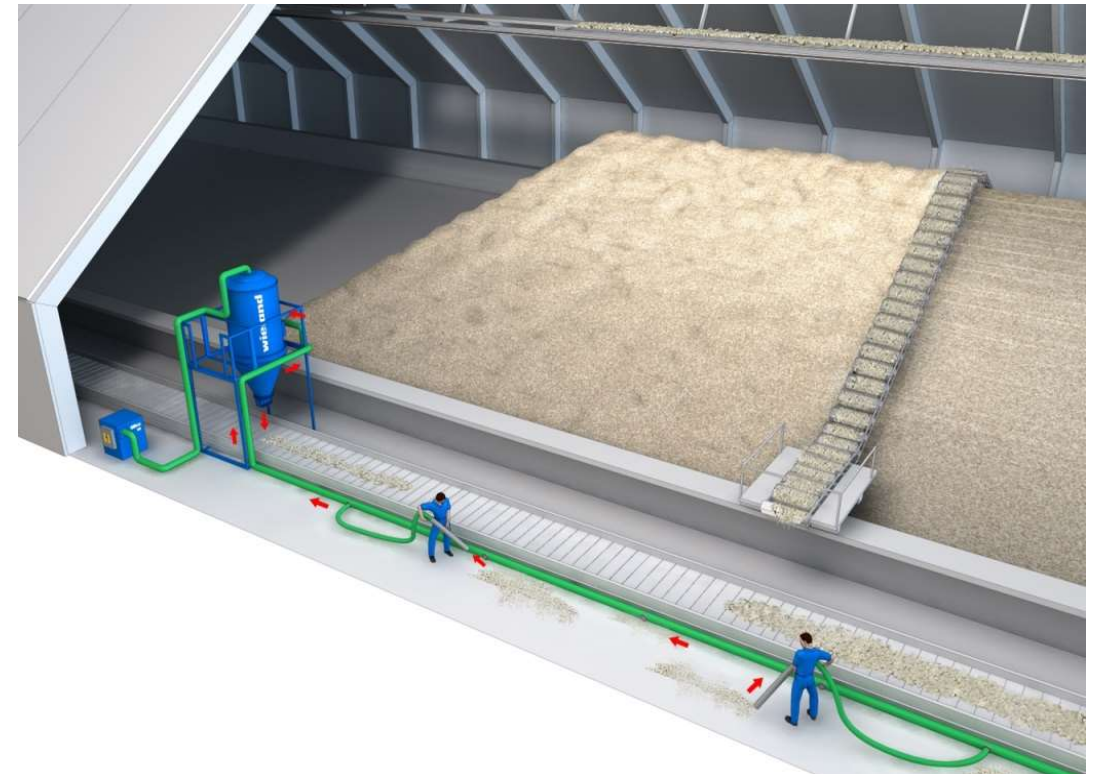
Three power versions: 3700-50, 6000-50 and 6000-80



**VacTruck 6000-80 BigBag
(available with different loading capacity)**



Stacker and Reclaimer Vacuum Solution



The optimum solution for storage halls with stacker and reclaimer to prevent workers and machines e.g. conveyor belts from dust.

HOLCIM and HEIDELBERG groups recommend WIELAND vacuum systems for their worldwide plants.



Reference examples:

- Sinoma CDI – China
- Holcim Cement, Slovakia, Bulgaria, Romania
- Dangote Cement, Nigeria
- Cementos Progreso, Guatemala
- PT. Indocement, Indonesia
- Volsk Cement, Russia
- Ohorongong Cement, Namibia
- Heidelberg Cement, Germany
- Saudi Cement, Saudi Arabia
- Riyadh City Cement, Saudi Arabia
- Emirates Cement Corporation, UAE
- Yanbu Cement, Saudi Arabia
- Arabian Cement, Syria
- Oman Cement Company, Oman
- Kuwait Cement, Kuwait
- The Libyan Cement Co., Libya
- Qatar National Cement Company

... and many more





Thank you very much for your interest

**Together we will figure out
which solutions are best suited to your needs.**

www.wieland-luft.com